



Mastertone Tints with Neutral Base M50...

Mastertone Aqueous Tints when applied to **M50 Neutral Base** provide bold full-depth colour. Ideal as a striking single colour Mastershield floor, or as a strong base for a flecked or flaked Mastershield floor.

NB. When specifying your desired tint colour, ensure that you stipulate the use of **M50 Neutral Base** to achieve full-depth colours as viewed to the right.



Clay



Biscuit



Bright Yellow



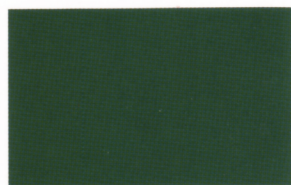
Tan



Bone



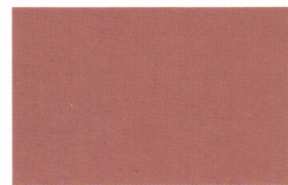
White



Bright Green



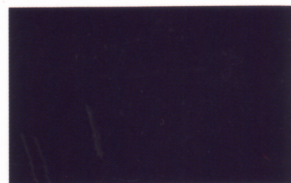
Silver Grey



Musk



Black



Bright Blue



Outback



Bright Red

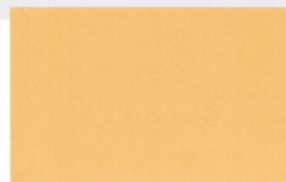
Mastertone Tints with Opaque Base M50...

Mastertone Aqueous Tints when applied to **M50 Opaque Base** provide paler, muted colours. This is ideal for a subtler Mastershield floor, or as a softer base for a flecked or flaked Mastershield floor.

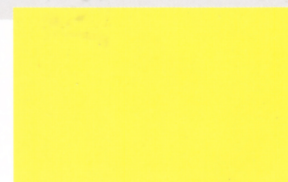
NB. When specifying your desired tint colour ensure that you stipulate the use of **M50 Opaque Base** to achieve muted colours as viewed to the right.



Clay



Biscuit



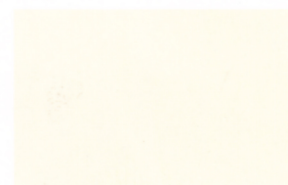
Bright Yellow



Tan



Bone



White



Bright Green



Silver Grey



Musk



Black



Bright Blue



Outback



Bright Red

Also for use with Mastershield M50, Lustre Seal Waterbased Acrylic Sealer and Covacrete.